

2020

# DARLAND HIGH SCHOOL



Darland High School  
Parental Information  
Guidance for opening

As you are aware the Welsh Government has announced that all students should return to school full time from September 2020. As a school we welcome this decision and are looking forward to having all students return to us.

Since March we have faced many challenges and have continued to provide education to our students through our Online Platforms. With the opening of the school we are looking forward to having students in the building and full classrooms again. This of course comes with a number of necessary changes to ensure we are keeping students and staff safe and working within guidance from the Welsh Government and the Public Health Wales. Please see below for general and safety information regarding the new term at Darland High School.

Kind Regards

Joanne Lee  
Headteacher

Dates for Return:

The table below outlines the plans for the first 2 weeks in September, from 14<sup>th</sup> September all pupils will be back on a normal timetable. This 2 week staggered start will allow us to welcome all year groups back slowly and support learners who may have been away from the school for over 5 months.

Year Group Start Times

September	Focus	7	8	9	10	11
Tuesday 1	Preparation Day & Mandatory training					
Wednesday 2	Preparation Day & Mandatory training					
Thursday 3	Transition Year 7	8:45				
Friday 4	Safety Review & Dept Planning					
Monday 7	Teaching					8:45
Tuesday 8	Teaching				8:55	8:45
Wednesday 9	Teaching	8:55	8:50			8:45
Thursday 10	Teaching			8:45	8:55	8:45
Friday 11	Teaching	8:55	8:50		8:55	8:45
Monday 14	Teaching	8:55	8:50	8:45	8:55	8:45

New School Day timings:

After a thorough consultation with parents, pupils, staff and governors the school day has now altered slightly. We would like to take the opportunity to remind you that the timings of the school day are now as shown below.

<b>Registration</b>	8:45 - 9:00am School gates locked at 8:45am.
<b>Period 1</b>	9:00 - 10:00am
<b>Morning Break</b>	10:00 - 10:15am
<b>Period 2</b>	10:15 - 11:15am
<b>Period 3</b>	11:15 - 12:15pm
<b>Lunch Break</b>	12:15 – 1:00pm
<b>Period 4</b>	1:00 – 2:00pm
<b>Period 5</b>	2:00 – 3:00pm

Term Dates:

School Holidays 2020-2021

School Holidays	Starts	Finishes
First Day of School	1 Sep 2020 (Tue)	
Autumn Half Term Holidays	26 Oct 2020 (Mon)	30 Oct 2020 (Fri)
Winter Holidays	21 Dec 2020 (Mon)	1 Jan 2021 (Fri)
Spring Half Term Holidays	15 Feb 2021 (Mon)	19 Feb 2021 (Fri)
Spring Holidays	29 Mar 2021 (Mon)	9 Apr 2021 (Fri)
Summer Half Term Holidays	31 May 2021 (Mon)	4 Jun 2021 (Fri)
Summer Holidays	21 Jul 2021 (Wed)	

Training Days:

4<sup>th</sup> January

22<sup>nd</sup> Feb

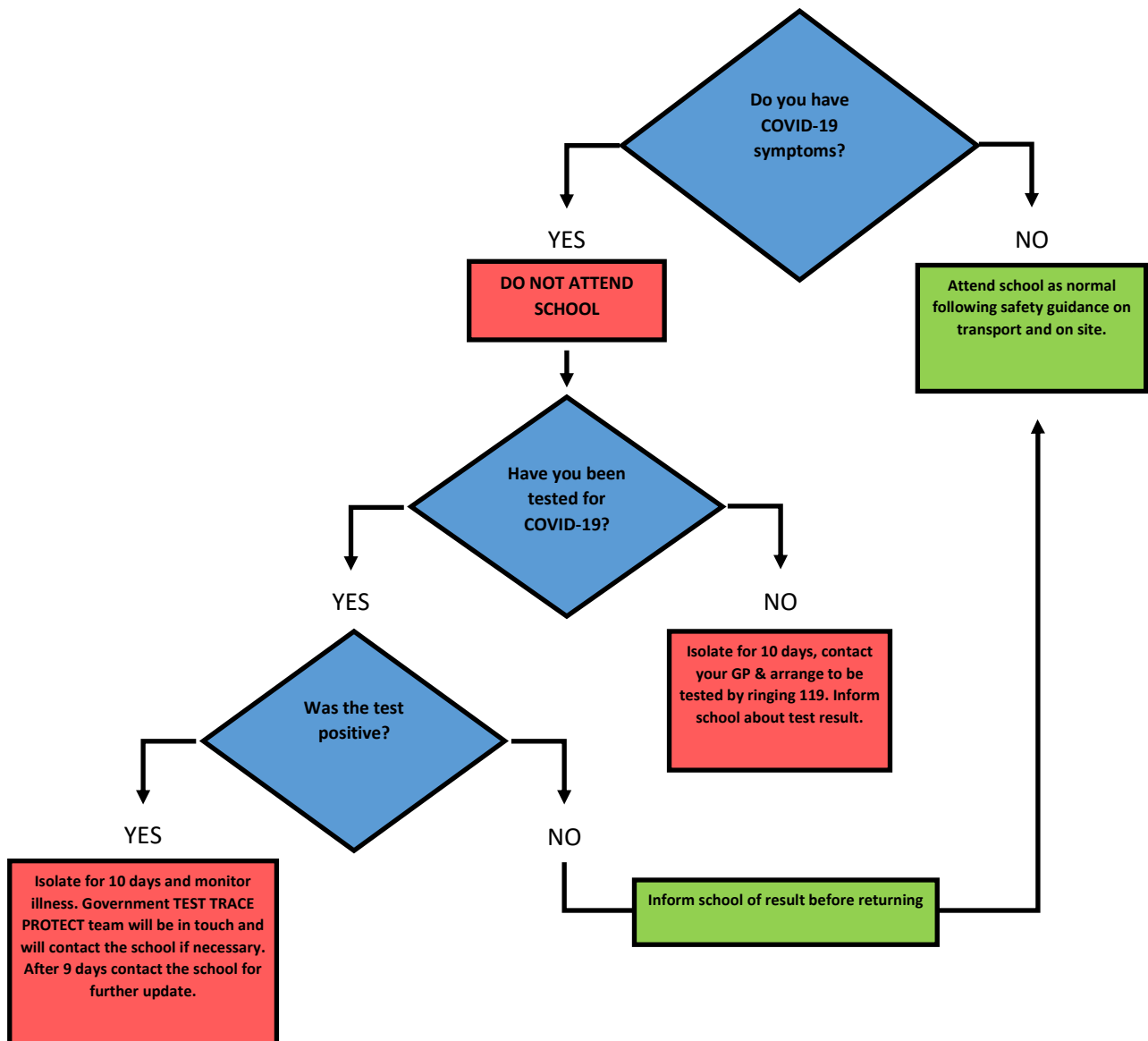
12<sup>th</sup> April

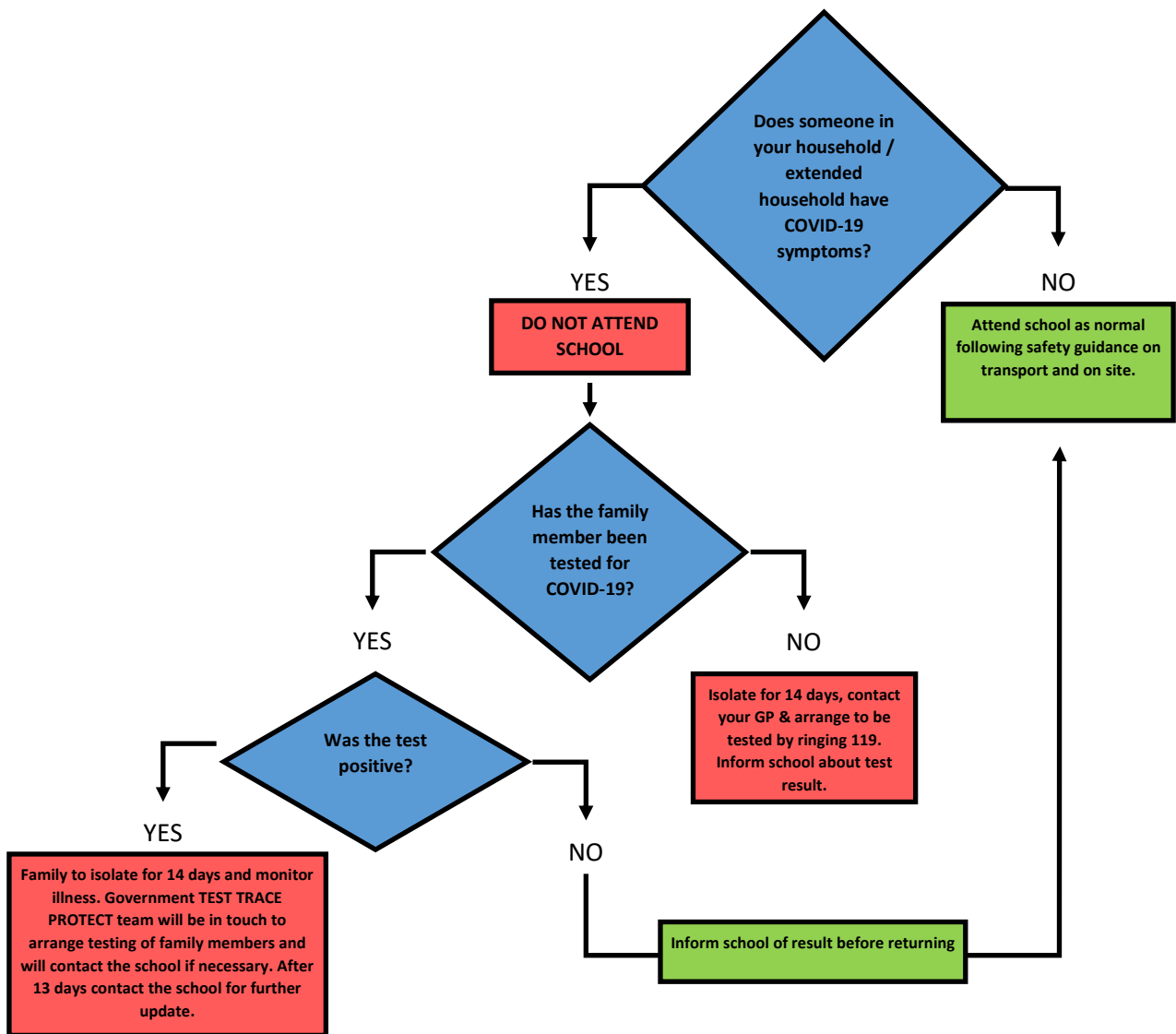
28<sup>th</sup> May

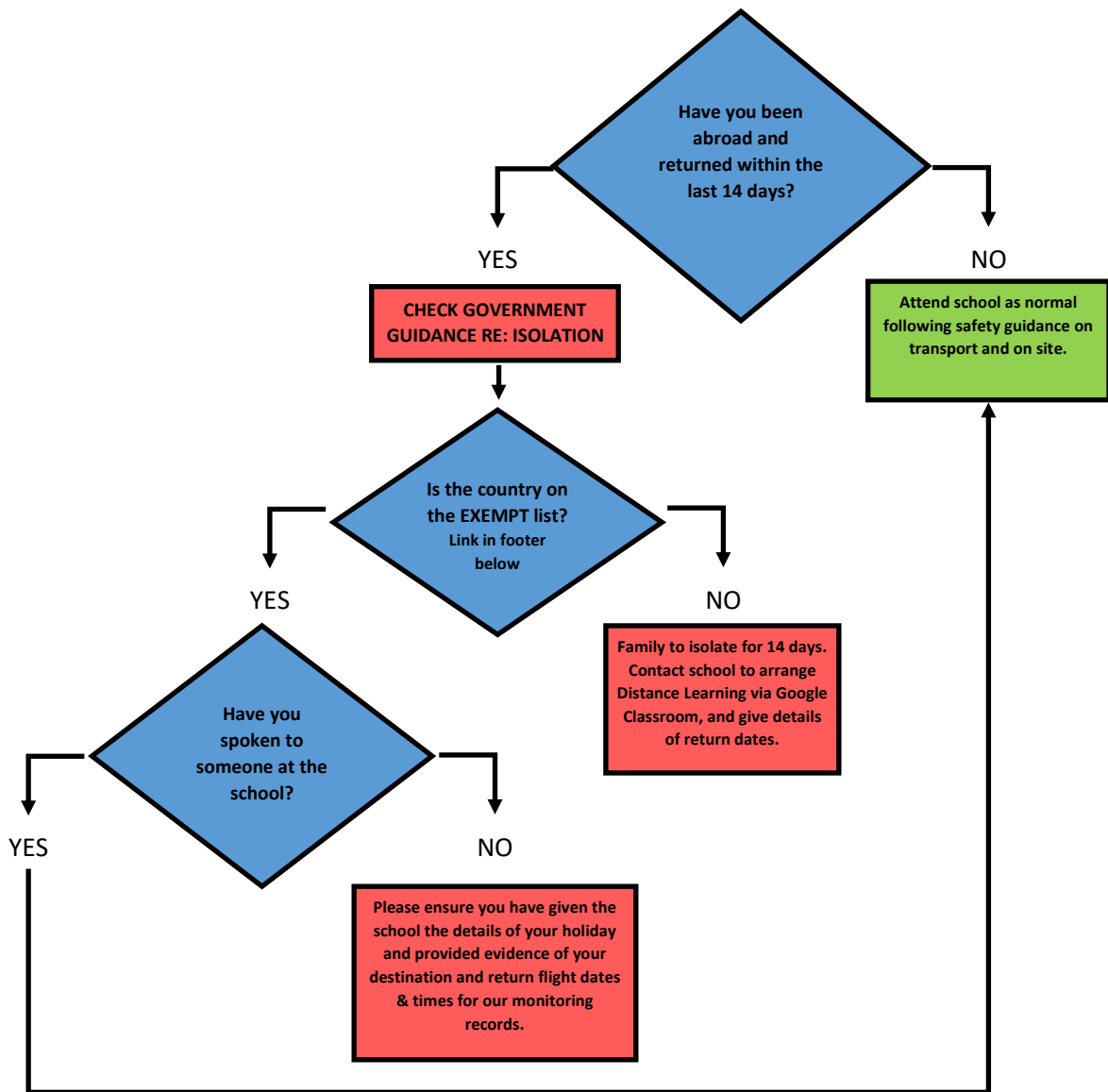
19<sup>th</sup> & 20<sup>th</sup> July

Attendance:

All students are expected to return to school by 14<sup>th</sup> September. However to keep pupils and staff safe the following guidelines MUST be followed if a student or anyone in the household has symptoms of COVID-19. Guidance is taken from <https://gov.wales/test-trace-protect.html> Autumn 2020, and therefore subject to change in line with the latest government advice.







<https://www.gov.uk/guidance/coronavirus-covid-19-countries-and-territories-exempt-from-advice-against-all-but-essential-international-travel>

*Please check this website for the latest information on travel advice and the Exempt List.*

### Movement around School:

We have created a video and placed links in our social media platforms to explain the safety processes on site which include:

- designated entrance points for year groups
- grouping learners together into year bubbles
- avoiding contact between separate groups as much as possible
- arranging classrooms with forward facing desks, recognising this may not be possible or appropriate in all settings
- sanitation stations in every classroom and in further locations around the site  
Students will be asked to sanitise their hands every time they enter and leave a classroom, and will assist teaching staff in wiping their desks on a regular basis in order that high-touch classroom surfaces will be cleaned between lessons.
- a requirement that people who are unwell with symptoms of COVID-19 stay at home
- robust hand and respiratory hygiene including ventilation
- continue increased cleaning arrangements
- active engagement with Test, Trace, Protect strategy
- staggered canteen times to ensure social distancing
- one-way systems on site
- staff maintaining distance from learners and other staff as much as possible
- use of face-coverings in indoor communal areas where social distancing cannot be maintained – please ensure the face-covering you provide your child is **re-useable, washable** and has no offensive or inappropriate images on the front. We strongly suggest you also provide your child with a sealable plastic bag to store the face-covering in when not in use.
- strict restriction on visitors to the site (pre-booked essential visits only)

Students will be released from lessons in a staggered manner using a scheduled 5 minute lesson - turnaround and a strict one-way system will be in place for everyone in the school building at all times. Teaching staff will generally remain in their classrooms, with classes in their year group bubbles attending different rooms for many of their lessons, having followed the strict one way and collection system. This is to allow specialist teaching areas to be used for KS4 examination classes and to avoid students remaining unsupervised in classrooms during lesson changeover, which would present a health and safety risk itself.

### Equipment:

Pupils will be required to bring their own equipment for the school day including pens, pencils, ruler, rubber and calculator.

### PE lessons:

PE lessons will be taught and students will need to bring a PE kit on the days they have PE. Adaptions have been made to the PE on offer to ensure pupils can exercise safely and increased cleaning routines will ensure the changing facilities are cleaned between groups.

### Uniform:

Full uniform is to be worn from September 3<sup>rd</sup>. We need to maintain the integrity of the year group bubbles and therefore need to be certain that students are in the right area for their year group – particularly at lunch and break times. Students will be required to spend some time outside and so a suitable coat is essential. Please keep an eye on the weather forecast, and as we approach Autumn a warm & waterproof coat is recommended

In line with the latest guidelines **Face-coverings** will be required in indoor communal areas where social distancing cannot be maintained – please ensure the face-covering you provide your child is **re-useable, washable** and has no offensive or inappropriate images on the front. We strongly suggest you also provide your child with a sealable plastic bag to store the face-covering in when not in use.



## Transport:

If a student uses a bus provided by the school or Arriva Wales they will need to use a face-covering during their journey. They will not be allowed access without one, and must keep the covering on until they alight from the bus.

Parents dropping-off / picking-up on site will be required to follow the one-way system which will be clearly indicated and is the same as the system we used in the 3 weeks prior to the summer break.

This would mean entry via Chester Road and exit via Darland Close onto Darland Lane. Please ensure you do not block access to people behind you when waiting for your children at the end of the day. Please do not park and restrict resident access on Darland Close.

## Buses:

Darland High School arrange 5 buses that drop-off and pick-up on school site, for further information please contact Janice Barnes at the school.

In addition Arriva Transport have been exceptionally supportive and have agreed to temporarily operate a dedicated bus service for Darland School Pupils - Route 1S. The times of these services are shown below.

Pupils catching these buses home will now board the bus at Darland High School.

Route Number	1	1	1	1	1	1	1	1	1	15	1	15	1	15	15	1
Wrexham Bus Station	545	600	622	637	652	707	722	737	737	X	752	X	807	X	X	822
Marford Red Lion	600	615	637	652	707	722	737	752	802	802	807	817	822	825	828	837
Rossett Darland School	-	-	-	-	-	-	-	-	806	-	-	821	-	829	832	-
Chester Business Pk Lakewood	611	631	652	707	722	737	752	807	-	822	-	-	837	-	-	852
Chester Railway Station	624	645	707	722	737	752	807	822	-	837	-	-	852	-	-	907

Route Number	1	1	1	1	1	1	1	1	1	1	1	15	15	1	15	15	1
Chester Railway Station	1159	1214	1229	1244	1259	1314	1329	1344	1402	1417	1432	X	X	1447	X	X	1502
Kings School	1210	1225	1240	1255	1310	1325	1340	1355	1413	1428	1443	-	-	1458	-	-	1513
Rossett Darland School	-	-	-	-	-	-	-	-	-	-	-	1510	1512	-	1514	1516	-
Marford Red Lion	1230	1245	1300	1315	1330	1345	1400	1415	1433	1448	1503	1514	1516	1518	1518	1520	1533
Wrexham Bus Station	1245	1300	1315	1330	1345	1400	1415	1430	1448	1503	1518	1529	1531	1533	1533	1535	1548

## Behaviour:

As always, we expect students to adhere appropriately to the school's Behaviour Policy at all times. Any student who cannot meet our expectations, including all additional COVID-19 measures, may be sanctioned by the Headteacher using the full range of sanctions available, including exclusions. We may be unable to 'internally isolate' students who are poorly behaved and so these students may well be required to work from home until we can arrange a meeting with the appropriate staff member (this is in-line with our temporary COVID-19 adjustments to our behaviour processes). For the safety of all we may need to contact parents / carers at short notice, so please ensure we hold your very latest contact details in school.

## Learning:

Where possible homework will be set using Google Classroom, and staff will be continuing to use this platform to share resources and set some pieces of work. It is essential that students have access to this platform, if students do not please speak to the appropriate Head of Year.

### Parental Meetings:

Only essential meetings will take place on school site, and these will be booked in advance. When attending the site please provide your details (via the electronic pad) to reception for 'Test, Trace, Protect' purposes (data will be held securely in line with GDPR guidelines). Please do not turn up at the school without a pre-booked appointment as reception staff will not be able to book meetings without advance notice from a member of staff.

### Parents' Evenings and Open Evenings:

Unfortunately we will not be able to hold these in the usual way. Further details of how these may operate in a different fashion will follow.

### Canteens:

Both canteens will be operating a take-away service at lunchtime and will have staggered times for each year group to ensure social distancing. However we would like to encourage students to bring sandwiches.

Due to time constraints and pupil numbers and social distancing requirements we will not be opening the canteens at break time. Please ensure your child has a snack and plenty of water for the school day. Water fountains will not be operational whilst we need to maintain reduced contacts around the school.

Where possible please pay for lunches on our online facility, if you require support setting this up or you require your child's unique number for the online payment, please contact the school.